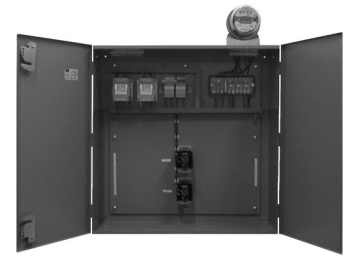


Les Distributeurs



(450) 662-9099



# CENTRE DE MESURAGE GFTEC

## GFTEC METERING CENTER

### #S64N0CBIPI

### 600V. 400A. KWh

#### Compteur électronique *Itron*

120 à 480 Volts auto-ajustable (120V.)  
20 Ampères 3 Phases 3 Fils Raccordement Bornier  
Affichage numérique KWh  
Modèle CAN0211

#### Electronic *Itron* meter

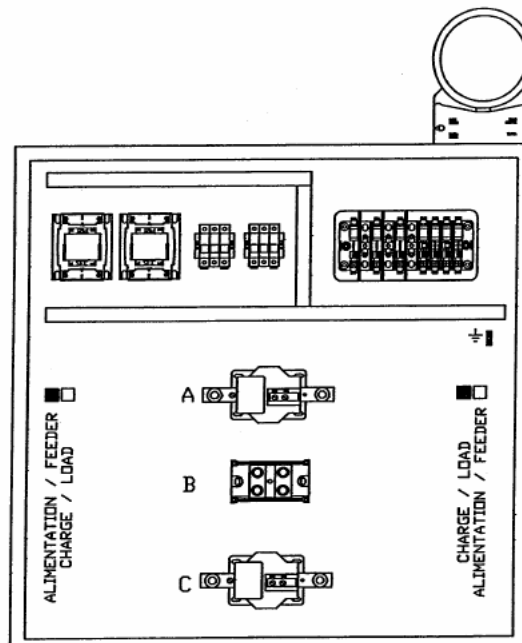
120 to 480 Volts auto-ranging (120V.)  
20 Amps 3 Phases 3 Wires Bottom Connection  
KWh digital display  
Model CAN0211

#### Cabinet de transformateur comprenant:

1 Cabinet NEMA-1 36" x 36" x 12"  
2 Transformateur de courant de type barre 400 :5A.  
Modèle MV7-917252  
1 Bloc de distribution  
2 Transformateur de potentiel 600 :120V. ME7-917277  
1 Interrupteur d'essai 7 pôles modèle 909519  
2 Porte-fusible c/a fusibles 4A.

#### Transformer cabinet including:

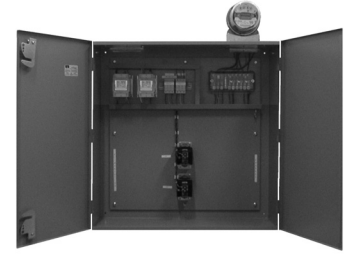
1 Cabinet NEMA-1 36" x 36" x 12"  
2 Current transformer bar type 400:5A.  
Model MV7-917252  
1 Power distribution bloc  
2 Potential transformer 600 :120V. ME7-917277  
1 Test switch 7 pole model 909519  
2 Fuse holder c/w fuses 4A.



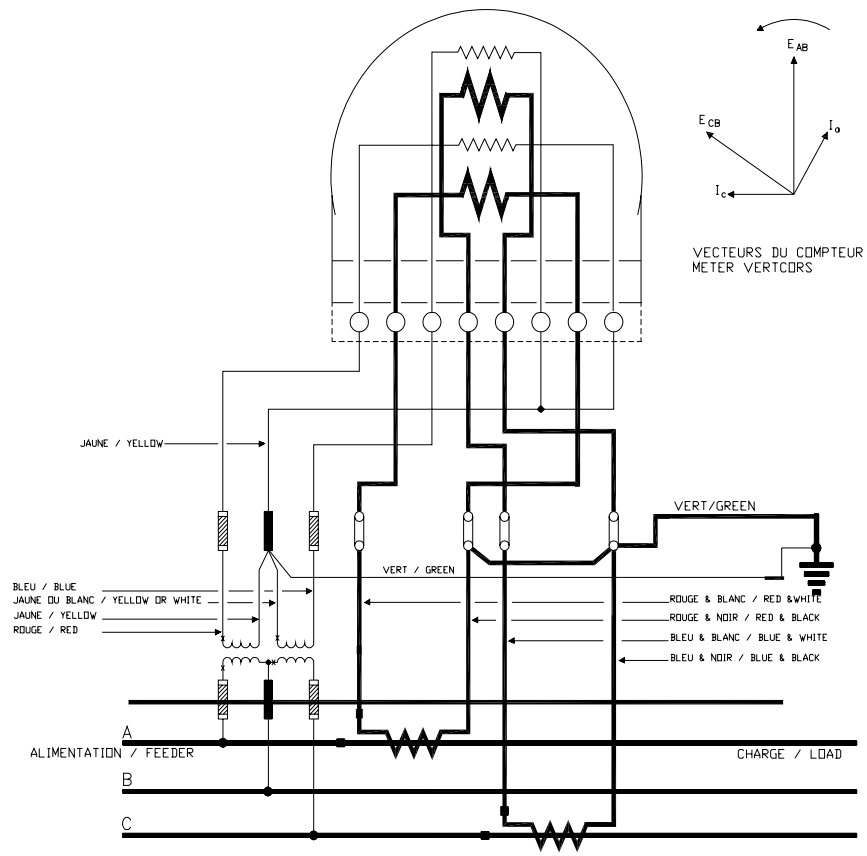
Les Distributeurs



(450) 662-9099



# CENTRE DE MESURAGE GFTEC GFTEC METERING CENTER #S64N0CBIPI 600V. 400A. KWh



CIRCUIT : 3-PHASE, 3-WIRE,  $\Delta$   
 METER : 2 ELEMENT, VERTICAL,  
 A-BASE, TRANS-TYPE  
 TRANSFORMERS : 2 C.T., 2 P.T.

|   |                   |
|---|-------------------|
| CONSUMER & CORPORATE AFFAIRS CANADA<br>LEGAL METROLOGY BRANCH |                   |
| SCHEMATIC DIAGRAM<br>OF<br>METER CONNECTIONS                  |                   |
| DRAWN BY VL   | OTTAWA, JUNE 1990 |
| DWG. NO:  | 3311              |