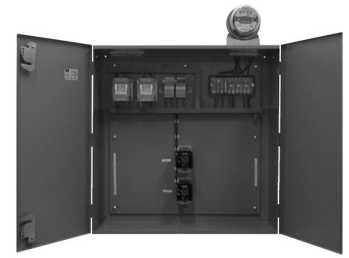


Les Distributeurs



(450) 662-9099



# CENTRE DE MESURAGE GFTEC

## GFTEC METERING CENTER

### #S63N0CBIPI

### 600V. 300A. KWh

Compteur électronique *Itron*

120 à 480 Volts auto-ajustable (120V.)  
20 Ampères 3 Phases 3 Fils Raccordement Bornier  
Affichage numérique KWh  
Modèle CAN0211

Electronic *Itron* meter

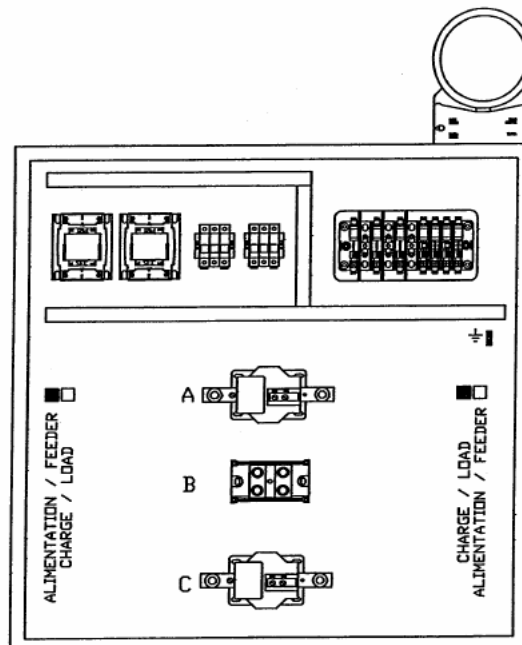
120 to 480 Volts auto-ranging (120V.)  
20 Amps 3 Phases 3 Wires Bottom Connection  
KWh digital display  
Model CAN0211

Cabinet de transformateur comprenant:

- 1 Cabinet NEMA-1 36" x 36" x 12"
- 2 Transformateur de courant de type barre 300 :5A.  
Modèle MV7-917251
- 1 Bloc de distribution
- 2 Transformateur de potentiel 600 :120V. ME7-917277
- 1 Interrupteur d'essai 7 pôles modèle 909519
- 2 Porte-fusible c/a fusibles 4A.

Transformer cabinet including:

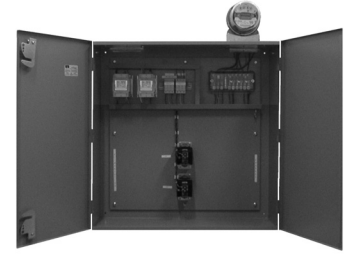
- 1 Cabinet NEMA-1 36" x 36" x 12"
- 2 Current transformer bar type 300:5A.  
Model MV7-917251
- 1 Power distribution bloc
- 2 Potential transformer 600 :120V. ME7-917277
- 1 Test switch 7 pole model 909519
- 2 Fuse holder c/w fuses 4A.



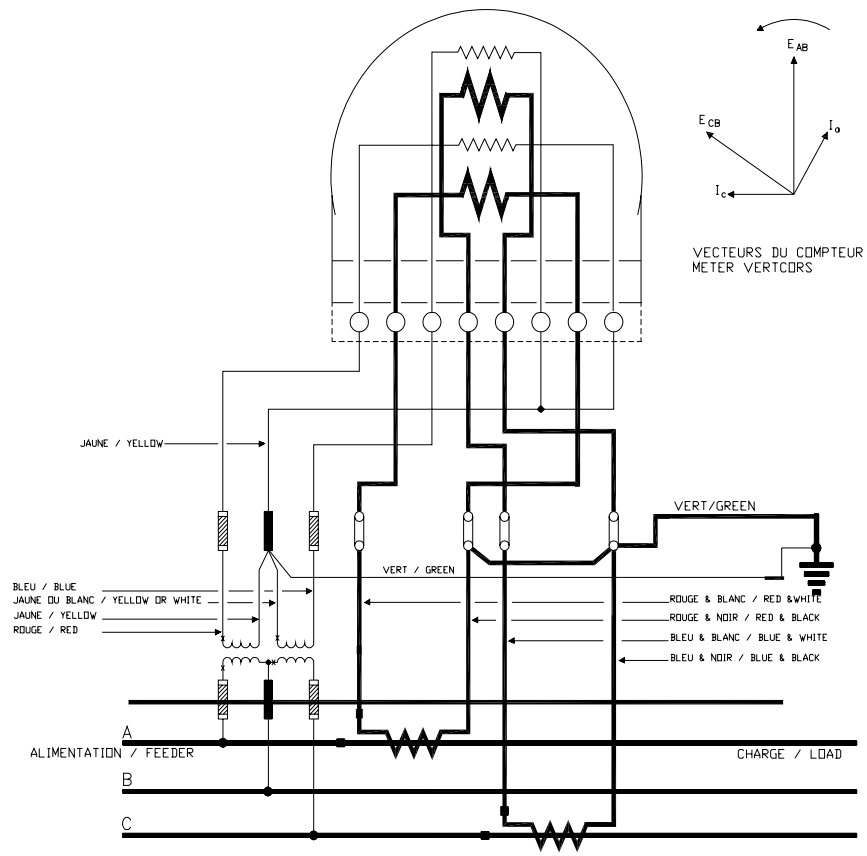
Les Distributeurs



(450) 662-9099



# CENTRE DE MESURAGE GFTEC GFTEC METERING CENTER #S63N0CBIPI 600V. 300A. KWh



CIRCUIT : 3-PHASE, 3-WIRE, Δ  
 METER : 2 ELEMENT, VERTICAL,  
 A-BASE, TRANS-TYPE  
 TRANSFORMERS : 2 C.T., 2 P.T.

CONSUMER & CORPORATE AFFAIRS CANADA LEGAL METROLOGY BRANCH	
SCHEMATIC DIAGRAM OF METER CONNECTIONS	
DRAWN BY VL	OTTAWA, JUNE 1990
DWG. NO:	3311