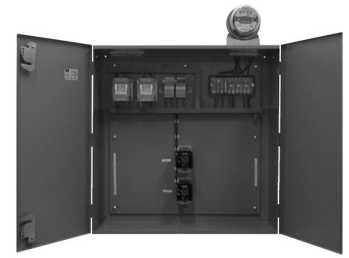


Les Distributeurs



(450) 662-9099



CENTRE DE MESURAGE GFTEC

GFTEC METERING CENTER

#S58NOCBIPO

347/600V. 800A. KWh

Compteur électronique **Itron**

120 à 480 Volts auto-ajustable (347V.)
20 Ampères 3 Phases 4 Fils Raccordement Bornier
Affichage numérique KWh
Modèle CAN0111

Electronic **Itron** meter

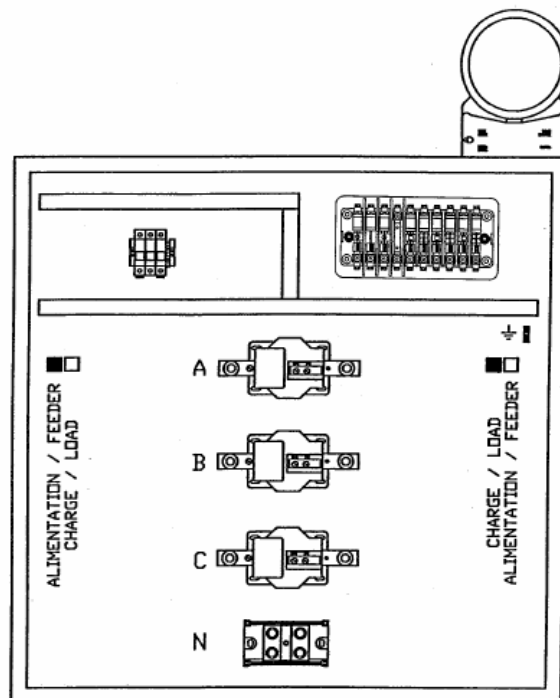
120 to 480 Volts auto-ranging (347V.)
20 Amps 3 Phases 4 Wires Bottom Connection
KWh digital display
Model CAN0111

Cabinet de transformateur comprenant:

1 Cabinet NEMA-1 48" x 48" x 12"
3 Transformateur de courant de type barre 800 :5A.
Modèle MV7-917255
1 Bloc de distribution
1 Interrupteur d'essai 10 pôles modèle 909601
1 Porte-fusible c/a fusibles 4A.

Transformer cabinet including:

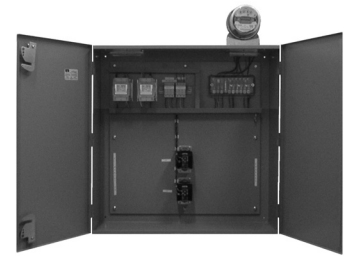
1 Cabinet NEMA-1 48" x 48" x 12"
3 Current transformer bar type 800:5A.
Model MV7-917255
1 Power distribution bloc
1 Test switch 10 pole model 909601
1 Fuse holder c/w fuses 4A.



Les Distributeurs



(450) 662-9099

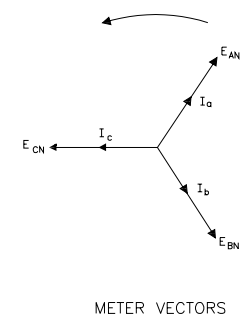
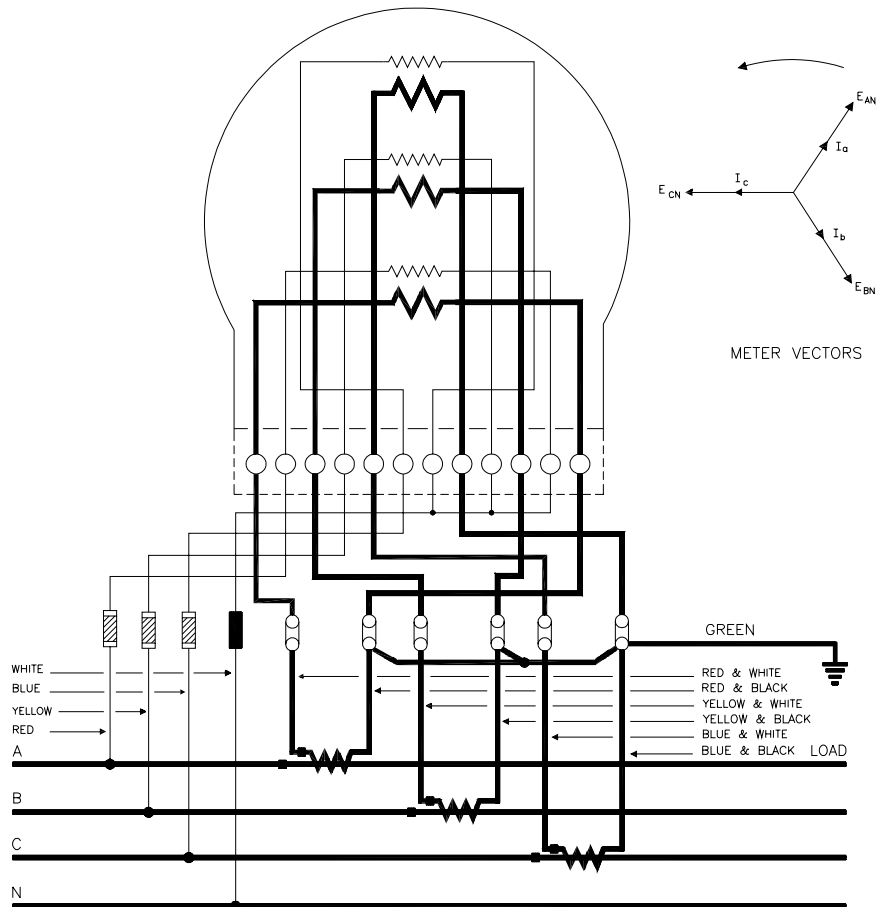


CENTRE DE MESURAGE GFTEC

GFTEC METERING CENTER

#S58NOCBIPO

347/600V. 800A. KWh



CIRCUIT : 3-PHASE, 4 WIRE, Y
 METER : 3-ELEMENT, VERTICAL,
 A-BASE, TRANS-TYPE
 TRANSFORMERS : 3 C.T.
 NOTE : See DWG.3416 for alternative connections

CONSUMER & CORPORATE AFFAIRS CANADA LEGAL METROLOGY BRANCH	
SCHEMATIC DIAGRAM OF METER CONNECTIONS	
DRAWN BY VL	OTTAWA, JUNE 1990
DWG. NO:	3455