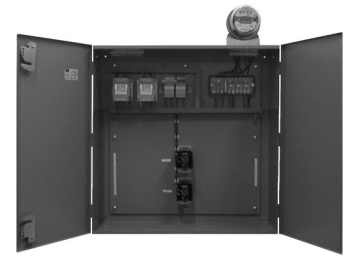


Les Distributeurs



(450) 662-9099



# CENTRE DE MESURAGE GFTEC GFTEC METERING CENTER

## #S56N2CBIPO

### 347/600V. 600A. KWh & KW & KVA

Compteur électronique **Itron**

120 à 480 Volts auto-ajustable (347V.)  
20 Ampères 3 Phases 4 Fils Raccordement Bornier  
Affichage numérique KWh & KW & KVA & PF  
Modèle CAN0040

Electronic **Itron** meter

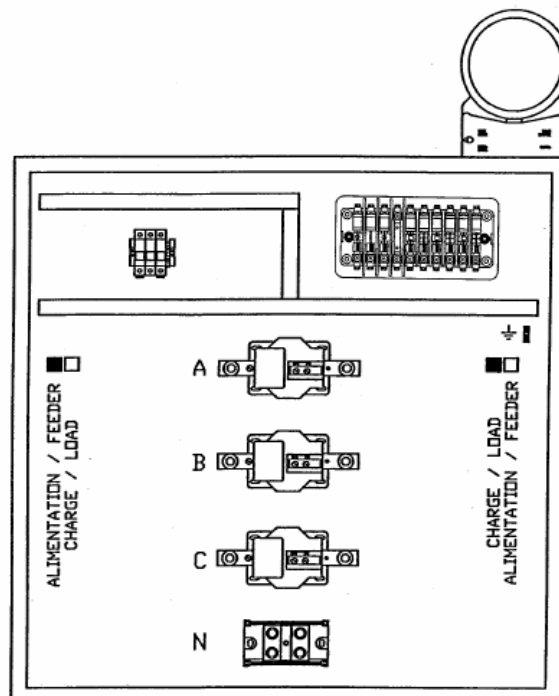
120 to 480 Volts auto-ranging (347V.)  
20 Amps 3 Phases 4 Wires Bottom Connection  
KWh & KW & KVA & PF digital display  
Model CAN0040

Cabinet de transformateur comprenant:

- 1 Cabinet NEMA-1 36" x 36" x 12"
- 3 Transformateur de courant de type barre 600 :5A.  
Modèle MV7-917254
- 1 Bloc de distribution
- 1 Interrupteur d'essai 10 pôles modèle 909601
- 1 Porte-fusible c/a fusibles 4A.

Transformer cabinet including:

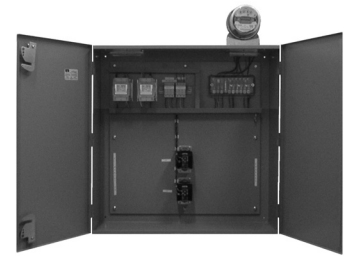
- 1 Cabinet NEMA-1 36" x 36" x 12"
- 3 Current transformer bar type 600:5A.  
Model MV7-917254
- 1 Power distribution bloc
- 1 Test switch 10 pole model 909601
- 1 Fuse holder c/w fuses 4A.



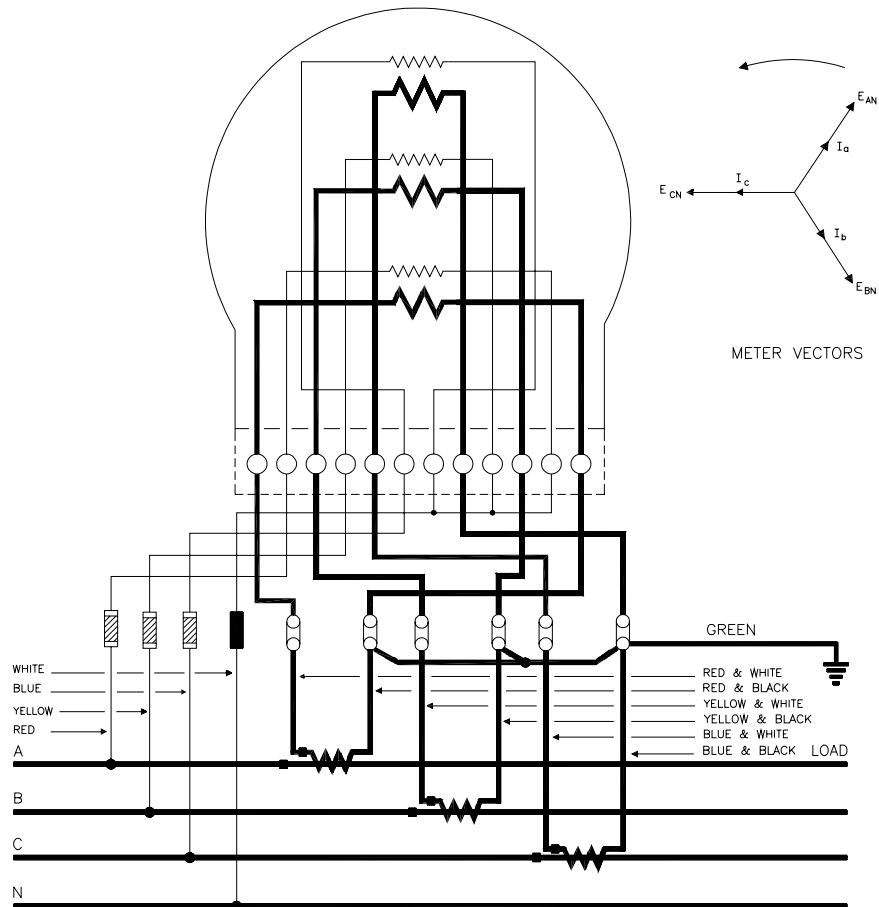
Les Distributeurs



(450) 662-9099



# CENTRE DE MESURAGE GFTEC GFTEC METERING CENTER #S56N2CBIPO 347/600V. 600A. KWh & KW & KVA



CIRCUIT : 3-PHASE, 4 WIRE, Y  
 METER : 3-ELEMENT, VERTICAL,  
 A-BASE, TRANS-TYPE  
 TRANSFORMERS : 3 C.T.  
 NOTE : See DWG.3416 for alternative connections

CONSUMER & CORPORATE AFFAIRS CANADA LEGAL METROLOGY BRANCH	
SCHEMATIC DIAGRAM OF METER CONNECTIONS	
DRAWN BY VL	OTTAWA, JUNE 1990
DWG. NO:	3455