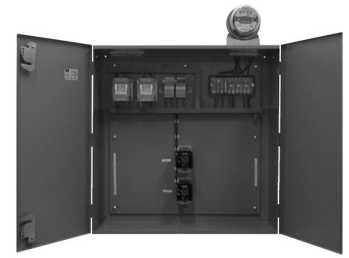


Les Distributeurs



(450) 662-9099



CENTRE DE MESURAGE GFTEC GFTEC METERING CENTER

#S54N2CBIPO

347/600V. 400A. KWh & KW & KVA

Compteur électronique *Itron*

120 à 480 Volts auto-ajustable (347V.)
20 Ampères 3 Phases 4 Fils Raccordement Bornier
Affichage numérique KWh & KW & KVA & PF
Modèle CAN0040

Electronic *Itron* meter

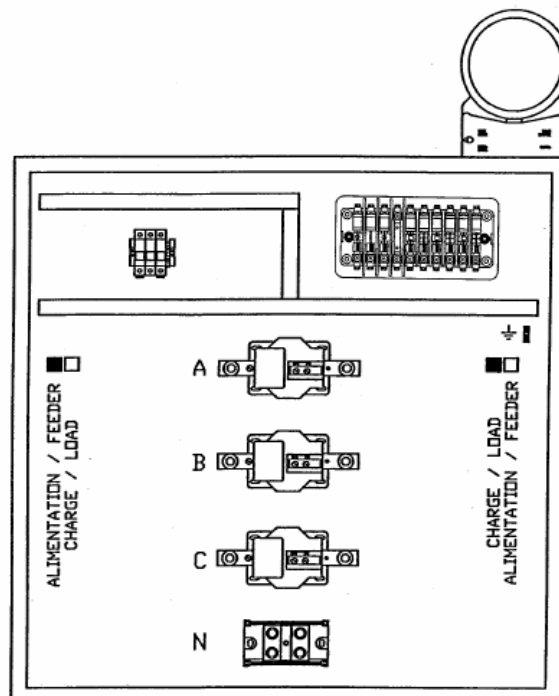
120 to 480 Volts auto-ranging (347V.)
20 Amps 3 Phases 4 Wires Bottom Connection
KWh & KW & KVA & PF digital display
Model CAN0040

Cabinet de transformateur comprenant:

- 1 Cabinet NEMA-1 36" x 36" x 12"
- 3 Transformateur de courant de type barre 400 :5A.
Modèle MV7-917252
- 1 Bloc de distribution
- 1 Interrupteur d'essai 10 pôles modèle 909601
- 1 Porte-fusible c/a fusibles 4A.

Transformateur cabinet including:

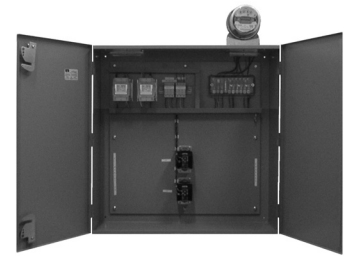
- 1 Cabinet NEMA-1 36" x 36" x 12"
- 3 Current transformer bar type 400:5A.
Model MV7-917252
- 1 Power distribution bloc
- 1 Test switch 10 pole model 909601
- 1 Fuse holder c/w fuses 4A.



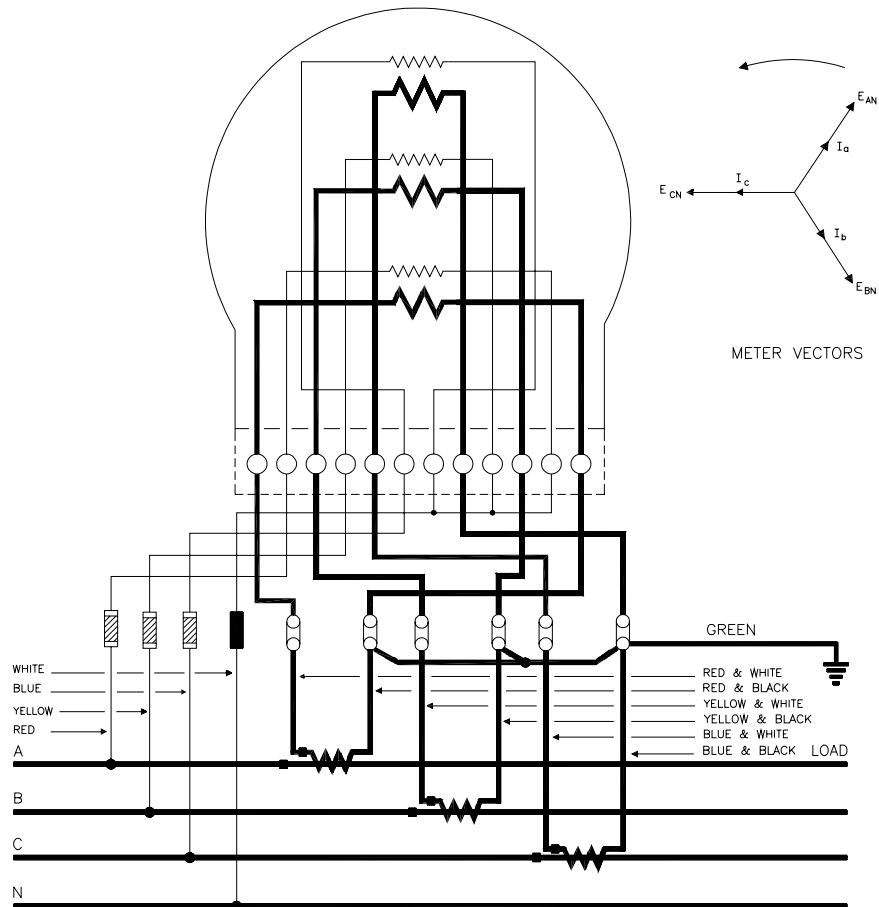
Les Distributeurs



(450) 662-9099



CENTRE DE MESURAGE GFTEC GFTEC METERING CENTER #S54N2CBIPO 347/600V. 400A. KWh & KW & KVA



CIRCUIT : 3-PHASE, 4 WIRE, Y
 METER : 3-ELEMENT, VERTICAL,
 A-BASE, TRANS-TYPE
 TRANSFORMERS : 3 C.T.
 NOTE : See DWG.3416 for alternative connections

CONSUMER & CORPORATE AFFAIRS CANADA LEGAL METROLOGY BRANCH	
SCHEMATIC DIAGRAM OF METER CONNECTIONS	
DRAWN BY VL	OTTAWA, JUNE 1990
DWG. NO:	3455