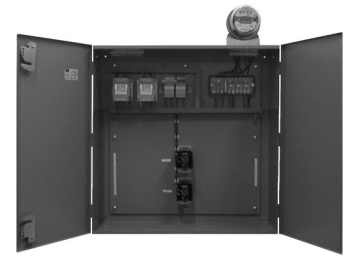


Les Distributeurs



(450) 662-9099



CENTRE DE MESURAGE GFTEC

GFTEC METERING CENTER

#S48N1CBIPO

120/208V. 800A. KWh & KW

Compteur électronique **Itron**

120 à 480 Volts auto-ajustable (120V.)
20 Ampères 3 Phases 4 Fils Raccordement Bornier
Affichage numérique KWh & KW & PF
Modèle CAN0030

Electronic **Itron** meter

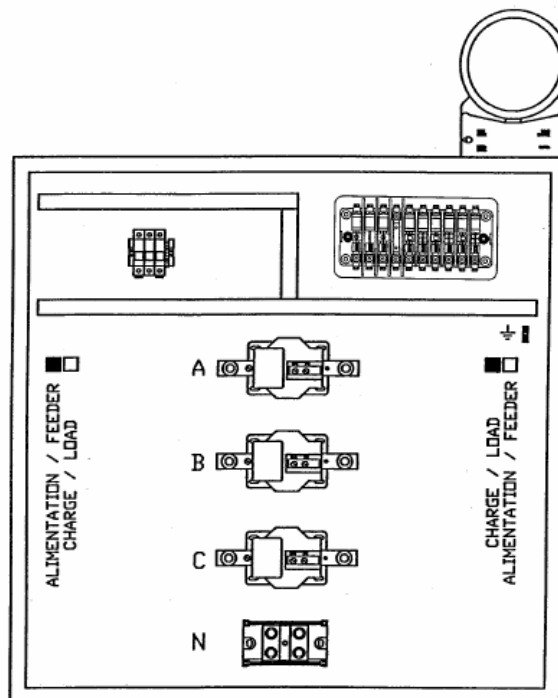
120 to 480 Volts auto-ranging (120V.)
20 Amps 3 Phases 4 Wires Bottom Connection
KWh & KW & PF digital display
Model CAN0030

Cabinet de transformateur comprenant:

- 1 Cabinet NEMA-1 48" x 48" x 12"
- 3 Transformateur de courant de type barre 800 :5A.
Modèle MV7-917255
- 1 Bloc de distribution
- 1 Interrupteur d'essai 10 pôles modèle 909508
- 1 Porte-fusible c/a fusibles 4A.

Transformer cabinet including:

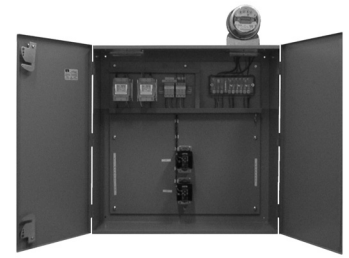
- 1 Cabinet NEMA-1 48" x 48" x 12"
- 3 Current transformer bar type 800:5A.
Model MV7-917255
- 1 Power distribution bloc
- 1 Test switch 10 pole model 909508
- 1 Fuse holder c/w fuses 4A.



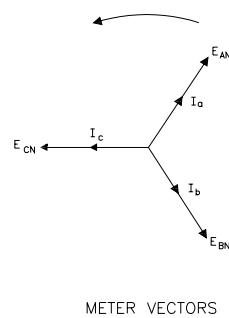
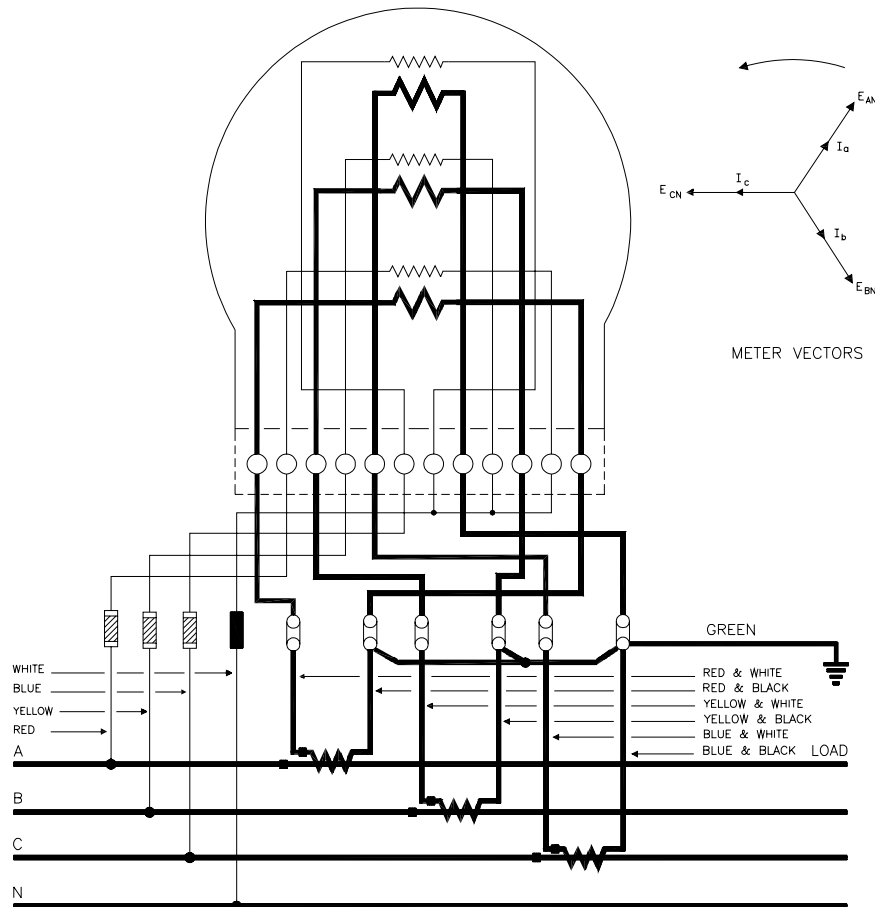
Les Distributeurs



(450) 662-9099



CENTRE DE MESURAGE GFTEC GFTEC METERING CENTER #S48N1CBIPO 120/208V. 800A. KWh & KW



CIRCUIT : 3-PHASE, 4 WIRE, Y
 METER : 3-ELEMENT, VERTICAL,
 A-BASE, TRANS-TYPE
 TRANSFORMERS : 3 C.T.
 NOTE : See DWG.3416 for alternative connections

CONSUMER & CORPORATE AFFAIRS CANADA LEGAL METROLOGY BRANCH	
SCHEMATIC DIAGRAM OF METER CONNECTIONS	
DRAWN BY VL	OTTAWA, JUNE 1990
DWG. NO:	3455