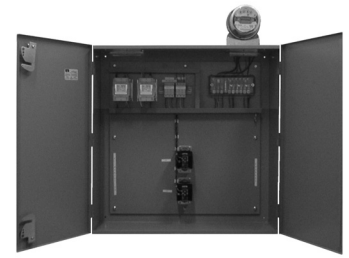


Les Distributeurs



(450) 662-9099



# CENTRE DE MESURAGE GFTEC

## GFTEC METERING CENTER

### #S46NOCBIPO

### 120/208V. 600A. KWh

Compteur électronique **Itron**

120 à 480 Volts auto-ajustable (120V.)  
20 Ampères 3 Phases 4 Fils Raccordement Bornier  
Affichage numérique KWh  
Modèle CAN0111

Electronic **Itron** meter

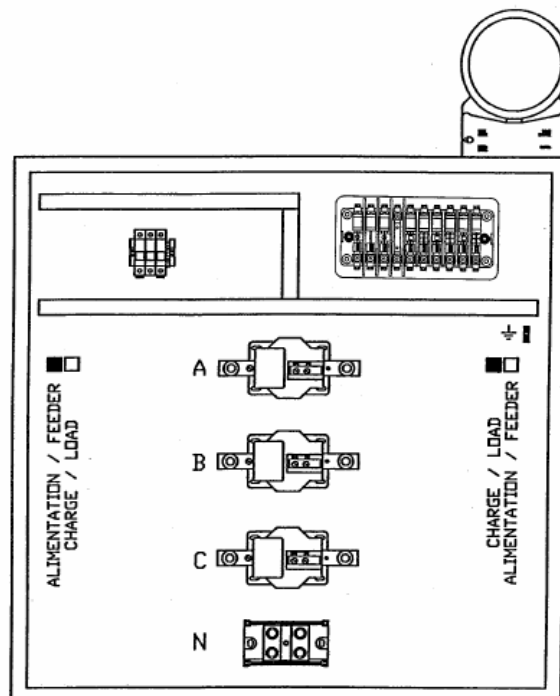
120 to 480 Volts auto-ranging (120V.)  
20 Amps 3 Phases 4 Wires Bottom Connection  
KWh digital display  
Model CAN0111

Cabinet de transformateur comprenant:

1 Cabinet NEMA-1 36" x 36" x 12"  
3 Transformateur de courant de type barre 600 :5A.  
Modèle MV7-917254  
1 Bloc de distribution  
1 Interrupteur d'essai 10 pôles modèle 909508  
1 Porte-fusible c/a fusibles 4A.

Transformer cabinet including:

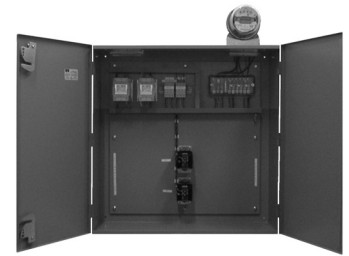
1 Cabinet NEMA-1 36" x 36" x 12"  
3 Current transformer bar type 600:5A.  
Model MV7-917254  
1 Power distribution bloc  
1 Test switch 10 pole model 909508  
1 Fuse holder c/w fuses 4A.



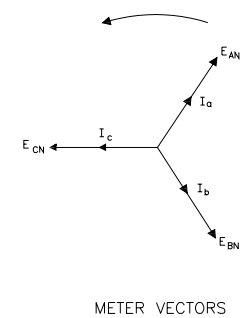
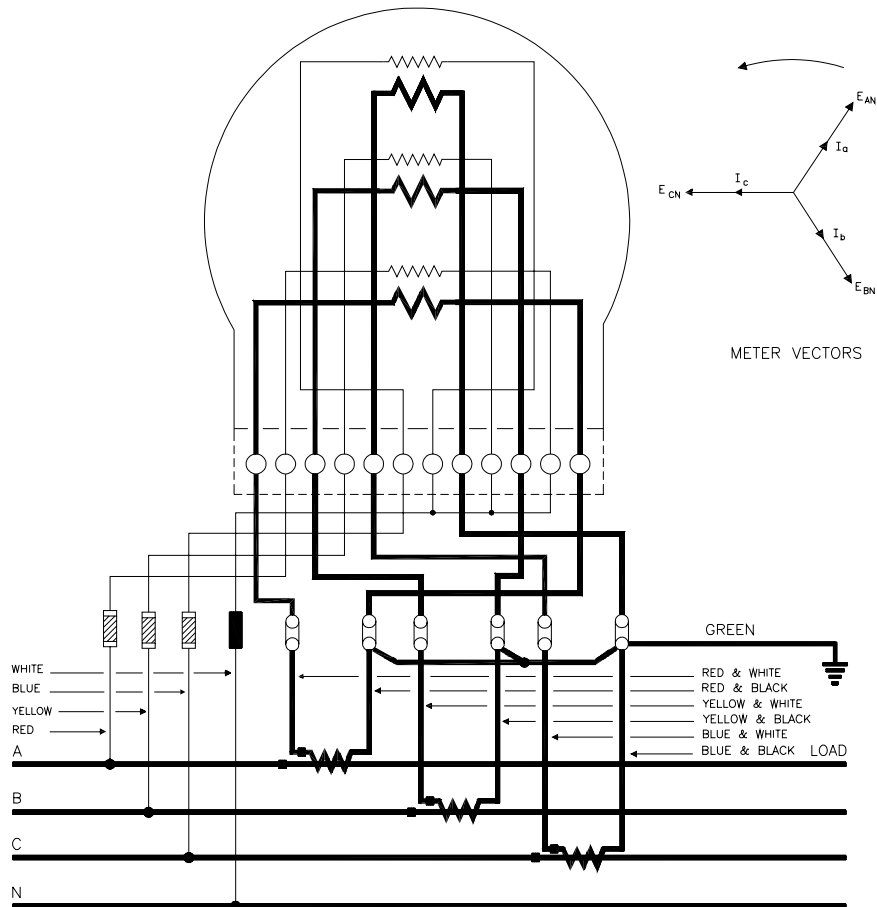
Les Distributeurs



(450) 662-9099



# CENTRE DE MESURAGE GFTEC GFTEC METERING CENTER #S46NOCBIPO 120/208V. 600A. KWh



CIRCUIT : 3-PHASE, 4 WIRE, Y  
METER : 3-ELEMENT, VERTICAL,  
A-BASE, TRANS-TYPE  
TRANSFORMERS : 3 C.T.  
NOTE : See DWG.3416 for alternative connections

CONSUMER & CORPORATE AFFAIRS CANADA LEGAL METROLOGY BRANCH	
SCHEMATIC DIAGRAM OF METER CONNECTIONS	
DRAWN BY VL	OTTAWA, JUNE 1990
DWG. NO:	3455